



NORDLAND LIGHTING

INDUSTRIAL, MINING & HAZARDOUS,
LIGHTING SINCE 1967

Tel: +27 (0)11 662 4300 Fax: +27 (0)11 662-4319 70 Driefontein Road, Muldersdrift, Gauteng, South Africa
sales@nordland.co.za www.nordland-lighting.com



Industrial, mining and hazardous lighting manufacturers Nordland Lighting, based in Muldersdrift, Gauteng, South Africa started out in 1967 as a luminaire importer but it soon became a local manufacturer instead. Today, the company produces and exports a large range of luminaires that includes hazardous and non-hazardous areas. Close co-operation with the SABS ensures compliance with relevant specifications and the company is a permit mark holder for its entire range of Ex lighting products. Products for non-hazardous applications comply with SANS/IEC 60598, as well as Accredited ISO 9001:2015.



Your Local Representative is:



Bulkheads



Fluorescent



MiniLite LED



Ex Floodlights



LED Luminaires

HAZARDOUS AREAS – ZONE 1

N60 / N60LED-Ex



ZONE 1 EX-PROOF: Available in 304 and 316 marine grade stainless steel. Luminaire range has G13 lamp holders of special design to allow the use of standard bi-pin lamps and is used with an electronic control gear. Available in emergency configuration. Optional extra: Isolating switch can be incorporated on control gear rail. **IP 65.**

NLE / NLED-Ex



ZONE 1 EX-PROOF: luminaire range has G13 lamp holders of special design to allow the use of standard bi-pin lamps and is used with an electronic control gear. Temperature rating T4, gas group II. Optional Extra: Isolating switch can be incorporated on the control gear rail. Available in emergency configuration. **IP 66.**

HX1 LED Ex-Proof Lighting



Series HX1LED Nordland Ex-Proof highbay are for use in locations such as Zone 1, 2, 21 & 22. Circuit watts from 30W to 200W; > 60 000 hr rated life expectancy, Ambient temperature -40°C ~ +55°C **IP 66**

BLD 150 LED Ex-Proof Lighting



Series BLD150LED Nordland Ex-Proof floodlight are for use in locations such as Zone 1, 2, 21 & 22. Ex Protection: Ex d IIB T6 Gb / Ex tb IIIB T85°C Db IP65 Circuit watts 20W to 160W; > 50 000 hr rated life expectancy. **IP 65**

HA1 LED Ex-Proof Lighting



Series HA1LED Nordland Ex-Proof pendant are for use in locations such as Zone 1, 2, 21 & 22, with unique internal heat sink structure. Various mounting options. Circuit watts from 20W to 40W; > 60 000 hr rated life expectancy, Ambient temperature -40°C ~ +55°C **IP 66**

EZE SAFE – Ex 'd'



For Zone 1 group I/IIB T6 to be used underground and surface coal mines. Applications: Walkways; Conveyor belts; Roadways etc. Fluorescent tubes: 600 mm, 1200 mm and 1500 mm available; Compact fluorescent energy savers and LED options. Clear flame retardant polycarbonate lens cover: 110V – 220V; 12V, 24V and 36V. Available in emergency mode: **IP66 SABS** approved.



LED VAPOUR PROOF LUMINAIRES

NFL-Eco LED



LED FLOOD LIGHT: Available wattages 50W, 100W, 150W, 200W, 300W, 100V - 240V at 50 000 hr rated life expectancy (L70/B10). Ambient working temperature -30°C ~ +50°C. Luminous Efficacy: 130lm/W IP66.

NFL-HP LED



High Power modular floodlight luminaire is suitable for sports and area lighting. Circuit watts from 300W ~ 900W, 100V - 240V at 50 000 hr rated life expectancy. Various opticals available. Impact protection IK08 Luminous Efficacy 110lm/W IP66.

NGB LED



LED BULK HEAD: Circuit watts 35W, 47W and 66W, 220V - 240V at 50 000 hr rated life expectancy. Luminous Efficacy 105lm/W ~ 130lm/W IP65.

NST LED



LED STREET LIGHT: Circuit watts from 30W to 180W, 100V - 277V at 50 000 hr rated life expectancy. Ambient working temperature -30°C ~ +50°C. Luminous Efficacy 120lm/W. Side and bottom entry available. Additional Intelligent management controls on request. IP66.

NFL-Mini LED



LED MINI FLOODLIGHT: Circuit watts 50W, 70W and 90W, 100V - 277V at 50 000 hr rated life expectancy. Ambient Temperature 30°C ~ +50°C. Luminous Efficacy 115lm/W. IP65.

JBLT/JBLS LED



LED VAPOURPROOF: Unique opal prismatic diffuser which optimise the light distribution. They are a good replacement for any standard electronic ballast luminaires. Available in 600 mm, 1200 mm and 1500 mm bodies. Circuit watts 28W / 39W (600 mm) 53W / 75W (1200 mm) 64W / 92W (1500 mm) 50000 hr rated life (L90/B10). Available in 9W, 18W and 24W LED tubes. IP65 and IP66.

NML LED



Flood Light

Bulk Head

LED FLOOD/BULK HEAD: Small Security light (various optical systems available) - Circuit watts 40W and 60W, 220V - 240V at 50 000 hr life expectancy (L70/B10). Ambient working temperature 35°C. IP65.

NHL100 LED



LED HIGH BAY: Advance ergonomic light distribution, high transmittance lens for even light distribution. The LED highbay is available in four optical beams for different type of wattages (100W / 120W / 150W / 200W). 100V - 240V at 50 000 hr rated life expectancy. Operates at -30°C ~ + 50°C. Luminous Efficacy 140lm/W. IP65.

JBLS-LB LED



LED LOW BAY VAPOURPROOF: Circuit watts 39W (600mm) 75W (1200mm) 92W (1500mm) at 50 000 hr rated life (L90/B10). 4 mm thick clear armour plate glass. Unique aluminium reflector design to optimise light distribution. IP65.



HAZARDOUS AREAS – ZONE 2, 21, 22

JBP



ZONE 2 VAPOURPROOF: luminaire range has a GRP body, polycarbonate injection moulded lens with linear prisms, with stainless steel clips. Control gear is approved for Zone 2, 21 and 22 applications. Available in single and double 18W, 36W and 58W versions. **IP65 and IP66.**

N50



ZONE 2 CORROSION RESISTANT: Available in 304 and 316 marine grade stainless steel. Luminaire range has a deep drawn stainless steel body, single piece pressed frame and stainless steel clips. 4 mm thick clear armour plate glass. Electronic Control Gear and LED driver are approved for Zone 2 applications. Available in single and double lamp 18W, 36W and 58W versions. Lens wire guard is available as an optional extra. **IP66.**

N50HID



ZONE 2 CORROSION RESISTANT: Available in 304 and 316 marine grade stainless steel. Luminaire range has a deep drawn stainless steel body, single piece pressed frame and stainless steel clips. The 4 mm thick lens is clear armour plate glass. Mounted on a gear tray, comprising the 150W HPS choke, Power Factor correction capacitor and ignitor with thermal cutout which protects the choke, and prevents the possibility of sparking during lamp change. **IP65.**

NHP/NHDP Highbay



ZONE 2 HIGHBAY: control gear housing in GRP. Suspension hooks carry the weight of the luminaire. Die cast aluminium lampholder assembly. The high purity bright anodised spun aluminium reflector incorporates a heat tempered armour plate glass carried in a silicone seal. This is spun into the reflector to form an integral unit. **IP66.**

ZONE 2 HIGHBAY: control gear housing in GRP. Suspension hooks carry the weight of the luminaire. Die cast aluminium lampholder assembly. 4 mm thick armour plate glass with polycarbonate shield spun into the polished reflector. Applications: Food industry, Tissue Production. **IP66.**

NGBP LED



LED ZONE 2, 21 & 22 Luminaire: High Pressure Die Cast Aluminium body and frame supplied with stainless steel clips. 4mm thick clear armour plate glass. The LED modules and control gear are approved for Zone 2, 21 & 22 applications. Circuit watts from 35W to 150W. **IP65.**

NFP



ZONE 2 FLOODLIGHT: luminaire consists of two parts. An exterior control-gear box and a separate lampholder/reflector compartment. The two units are assembled together to form an integral unit. Extreme temperature rises are limited by the separation of control gear and lamp. Lamps options are mercury vapour, metal halide, and high pressure sodium. **IP66.**

HL1 LED Ex-Proof Lighting



ZONE 2 LINEAR FITTING: Ex-Proof linear luminaire are for use in locations such as Zone 2 & 22. Circuit watts 35W and 75W; > 60 000 hr rated life expectancy, Ambient temperature -40°C ~ +55°C Luminous Efficacy 130lm/W. Emergency option available. **IP 66**



INDUSTRIAL LIGHTING – VAPOUR PROOF LUMINAIRES

JB / JBF



VAPOURPROOF: JB for Industrial applications with twistlock lamp holders. JBF luminaire range has a flame retardant body, polycarbonate injection moulded lens with linear prisms, with stainless steel clips. Available in emergency configuration. **IP65 and IP66.**

NMS1200



MICROWAVE MOTION SENSOR: Pre-set motion detector. Detection is possible through doors, glass panes and thin walls. Suitable for Zone 2 indoor and outdoor classified areas. SA Patent No. 2012/06/12. Rated load 1200W @ 220VAC – 240VAC. **IP65.**

N20



CORROSION RESISTANT: Available in 304 and 316 marine grade stainless steel. Luminaire range has a deep drawn stainless steel body, single piece pressed frame and stainless steel clips. 4 mm thick clear armour plate glass. Available in T8 and T5 lamps. LED strip versions also available. **IP65.**

AVAILABLE IN LED

MiniLite LED



For underground and surface areas such as walkways; conveyor belts; roadways and washbays, etc. 50 000 hr rated life expectancy. 14W (110 LEDs). Clear polycarbonate lens cover. Connection via minilite power junction box. Voltage: 90V – 250V. **IP65.**

MiniLite Energy Saver – Single



Used for underground haulage and surface areas; Available in a single 12W LED GU10 globe. Voltage: 110V – 220V. Diffused polycarbonate lens cover. Connection via MiniLite power junction box. **IP66.** Lead and plug available on request.

NHG/NHD



HIGHBAY: Luminaire is a die cast aluminium lampholder assembly. Control gear housing in GRP. Suspension hooks carry the weight of the luminaire. 4 mm thick armour plate glass with polycarbonate shield spun into the bright anodised reflector ensures an **IP66** rating.

NB



BULKHEAD: Luminaire has been designed to satisfy a wide range of Industrial applications. Options include Wall Ceiling Brackets. Angled wall brackets. Antivibration mountings, pole mounting brackets and an angled post-top bracket. Available in emergency configuration. LED versions available Ingress Protection: **IP 65.**

MiniLite Energy Saver – Double



Used for underground haulage and surface areas; Available in double 12W LED GU10 globes. Voltage: 110V – 220V. Diffused polycarbonate lens cover. Connection via MiniLite power junction box. **IP66.** Lead and plug available on request.

NGB



BULKHEAD: Luminaire range has been designed for indoor and outdoor lighting installations, industrial and security lighting applications. This bulkhead luminaire range is suitable for ceiling, wall or pole mounting. Available in 70W to 150W HPS, 70W to 150W MH lamps and 80W to 125W MVE lamps (optional). **IP 65.**

NFS/Maxi



FLOODLIGHT: luminaire consists of two parts. An exterior control-gear box and a separate lampholder/reflector compartment. Extreme temperature rises are limited by the separation of control gear and lamp. Lamps options are MVE, MH, and HPS. **IP 65.**

Midi



FLOODLIGHT: luminaire consists of a GRP head compartment with lampholder and reflector assembly. The 150W high pressure sodium control gear is housed within the head. Instant restrike version 2x26W compact fluorescent. **IP 65.**

Mini



FLOODLIGHT: luminaire consists of a GRP head compartment with lampholder and reflector assembly. The control gear is housed within the head. Available in 70W HPS, 125W MVE and 100W MH. **IP 65.**



NCL-LED



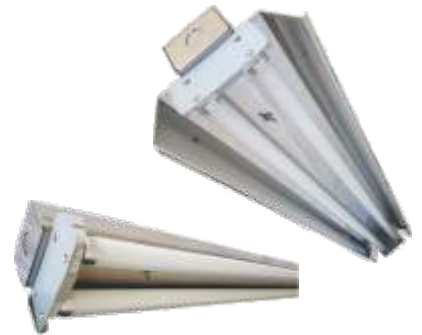
LED CANOPY: Recessed, surface and suspended mount. Circuit watts available from 50W – 200W, 100V – 277V at 50 000 hr rated life expectancy. Ambient temperature -30°C ~ 50°C. Luminous Efficacy 160lm/W Colour temperature 5000K. **IP 66.**

NHO



HIGHBAY: DMC glass fibre reinforced polyester, compression moulded in two sections. Control gear housing in GRP. Suspension hooks carry the weight of the light fitting during installation. **IP 20.**

NSC



CORROSION RESISTANT OPEN CHANNEL: Luminaire made of stainless steel and is available in 600mm, 1200mm and 1500mm lengths. Available in T8 and LED tubes. Stainless stell wings available as an optional extra. **IP 20.**

NBV



BULKHEAD: series bulkhead, economical and energy efficient compact fluorescent suitable for industrial and/or public buildings, weather-proof ceiling or wall mounting luminaires if required, particularly where low running costs and long trouble-free operation are important. Suitable for indoor and outdoor applications. Available in emergency configuration. **IP 65.**

T8 LED TUBES



Frosted and Clear tubes



LED TUBES: Fully compatible to the traditional T8 fluorescent lamps. The milky-white Frosted glass as Clear glass tubes provides high light transmittance and soft light colour, available in 600 mm (9W), 1200 mm (18W) and 1500 mm (24W) LED tubes. 35 000 hr rated life expectancy. Ambient working tempaure -10°C ~ 45°C.

NBR



BULKHEAD available with flat diffuser or dome diffuser. Architecturally designed bulkheads for use with compact fluorescent lamps. The clean modular design of these vandal resistant bulkheads makes them ideal features to form interesting architectural lighting design elements along walkways, façades and stairs. **IP 65.**

WVB



PRISON FITTING: Heavy duty luminaire designed to be used in areas subject to physical abuse with a view to vandalise and destroy. Available in 304 and 316 marine grade stainless steel. Also available in galvanised steel. Require a special tool to open luminaire. 4 mm thick clear polycarbonate lens, with internal rib to limit glare. Mechanically fixed into and then sealed into the fabricated frame. The combination is designed for impact strength, and appearance. **IP 54.**

NCP



PRISON FITTING: Heavy duty luminaire based on the JB Polycarbonate diffuser with sheet steel fabricated body and lens frame. Available in 304 and 316 marine grade stainless steel. Also available in galvanised steel . Require a special tool to open luminaire. 1,2 mm thick clear polycarbonate lens, with internal linear prism to limit glare. Sealed into the fabricated frame. The combination is designed for impact strength, and appearance. **IP 54.**

