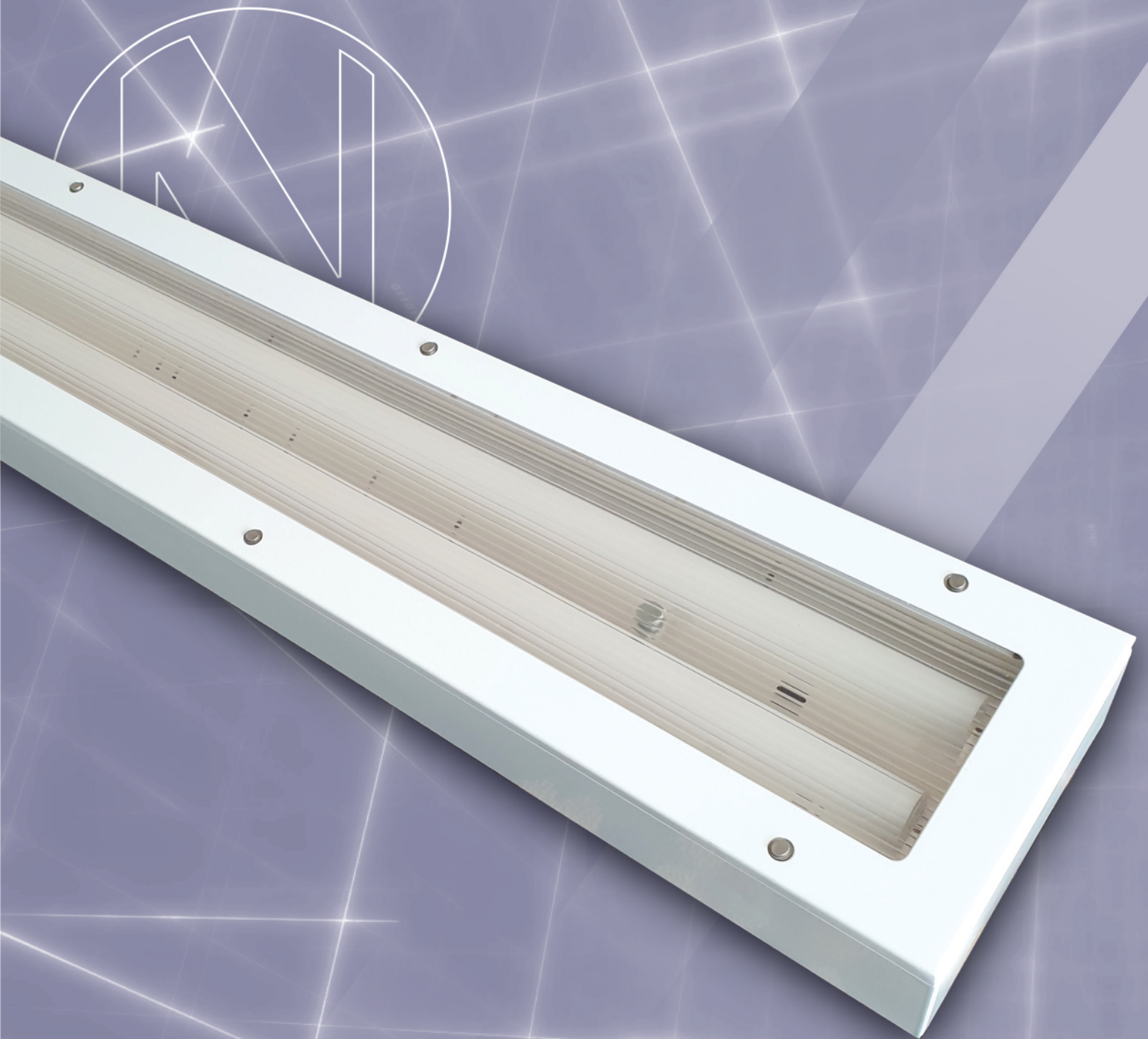


# WVB-LS LED Tamper Proof



The **WVB-LS LED Tamper Proof** is a range of enclosed vandal/tamper proof luminaires designed to operate LED strips and are available in 600mm, 1200mm and 1500mm lengths. The luminaire has a unique reflector design which optimizes the light distribution. The heavy-duty luminaire is designed to be used in areas subject to physical abuse with a view to vandalize and destroy. Tamper proof screws require a special tool for opening the luminaire. The **WVB-LS LED Tamper Proof** continues the proud heritage of NORDLAND LIGHTING's quality standards.



**NORDLAND LIGHTING**

## WVB-LS LED Tamper Proof

**Applications:** Suitable for use in Prison Cells, Subways Railway Stations, Magistrates Court Holding Cells, Police Station Holding Cells, Small factories with low mounting heights, or Covered Walkways and Mine Hostels.

**Body & Frame:** Manufactured from cold rolled sheet metal of minimum thickness 0.8 mm gauge. White epoxy powder coated.

**Gear Tray:** Manufactured from 0.8 mm gauge cold rolled sheet metal, formed to give the best light distribution.

**Diffuser:** 4 mm thick clear polycarbonate lens, with internal linear prism to limit glare. Sealed into the fabricated frame. The combination is designed for impact strength, and appearance.

**Lamp Types:** The gear tray is designed to house the LED strips.

**Note:** Lightning Protection: All electronic products such as light fittings and computers are subject to violent destruction when struck by lightning. An independent lightning protection device, well earthed, needs to be inserted in the supply line before the lighting circuit, where any electronic control gear is used in light fittings. Control gear damaged by lightning is not covered under guarantee.

**Screws:** Tamper Proof round headed screws are used to secure the frame to the body. A special tool is required to open this luminaire.

**Conduit entry:** The body has provision for a central 20mm rear entry.

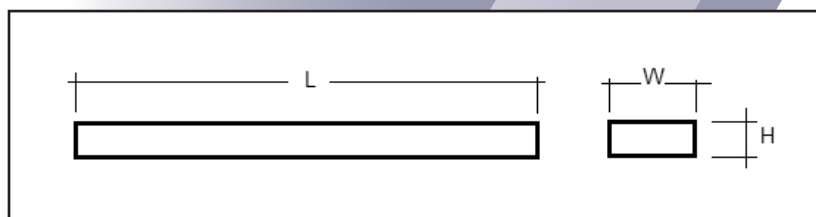
**Emergency Mode:** Emergency Options available on request.

**Night Light:** Available on request.

**Ingress Protection:** IP54 after installation.

**Photometric Data:** Photometric files available on request.

**Warranty:** 5 Year



Model Name	WVB-LS LED Tamper Proof					
	2ft (600mm)		4ft (1200mm)		5ft (1500mm)	
<b>Amperage</b>	500mA	350mA	500mA	350mA	500mA	350mA
<b>Rated Wattage(W)</b>	28W	36W	53W	68W	64W	90W
<b>Luminous Efficacy (system)</b>	119.7lm/W	119.7lm/W	119.7lm/W	119.7lm/W	119.7lm/W	119.7lm/W
<b>Luminous Flux (system)</b>	3351lm	4309lm	6344lm	8139lm	7661lm	10773lm
<b>Colour Temperature</b>	4000K					
<b>Colour Rendering Index</b>	>Ra80					
<b>Rated Voltage</b>	220V-240V AC, 50/60Hz					
<b>Ambient Temperature</b>	-20°C to +40°C					
<b>Power Factor</b>	>0,96					
<b>Rated Lifetime</b>	50 000 Hr.					
<b>Installation</b>	Wall & Ceiling mounting					
<b>Ingress Protection Grade</b>	IP54 after installation					
<b>Dimensions</b>	L x W x H		L x W x H		L x W x H	
	685x220x90mm		1300x220x90mm		1600x220x90mm	

Nordland reserves the right to change any specification or design without prior notice.