

# NLZ EM LED II

The **NLZ EM LED II** Non-Maintained EM luminaire uses specially designed Ex LED light sources and is paired with Ex certified LED inverter and battery. The luminaire is designed to be used in Zone 1,2,21 and 22 areas for light under emergency conditions. It is energy efficient with high performance, low maintenance and a long life span. It's suitable for wall, ceiling, and bracket mounting. The **NLZ EM LED II** continues the proud heritage of NORDLAND LIGHTING's Ex safety standards whilst utilizing the latest LED technology.

## NLZ EM LED II

**Applications:** Surface Ex Zone 1, 2, 21, 22 areas for Emergency lighting.

**Housing:** Body manufactured from extruded aluminium with a UV stabilized smooth clear polycarbonate lens and polycarbonate endcaps, fitted to the body. The luminaire is held together with 8 stainless steel screws.

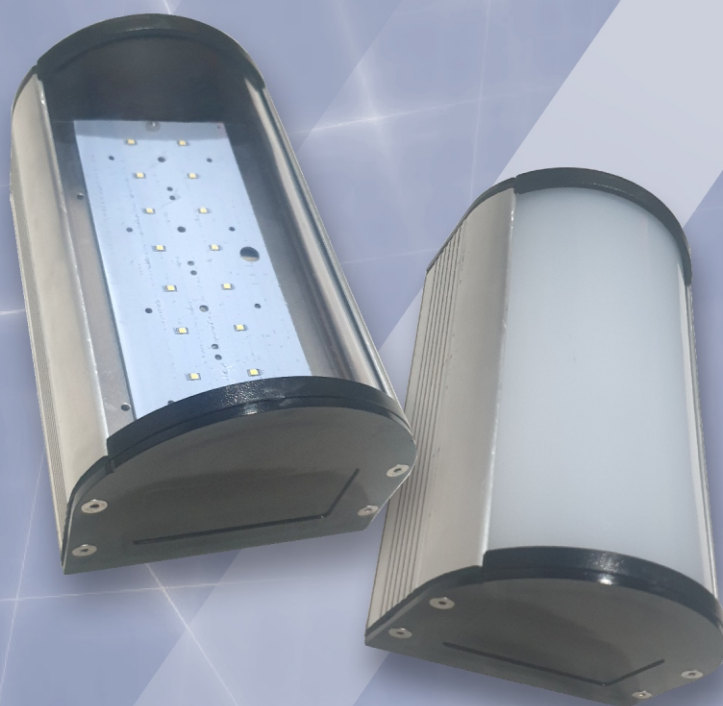
**Gasket:** The rubber gasket between the lens and body provides a IP65 seal.

**Mounting:** Brackets for ceiling or wall mount.

**Wiring:** Wired as a standalone unit, or can have a through wired version as an option to be used in conjunction with switched Zone 1, 2, 21, 22 Ex luminaire.

**Warranty:** 1 year

\* For Surface use only\*



Model Name	NLZ EM LED II
Battery Lifetime	Minimum 1 hour
Rated Wattage(W)	6W
Luminous Efficacy (system)	120lm/W
Luminous Flux (system)	720lm on emergency
Colour Temperature	5700K
Rated Voltage	230VAC, 50/60Hz
Ingress Protection Grade	IP65
Ambient Temperature	-20°C to +40°C
Installation	Wall, Ceiling, Bracket
Dimensions	L x W x H
	230x127x78mm
Ex-mark	Ex e mb ib IIC T4 Gb / Exe mb ib IIIC T135°C Db



**NORDLAND LIGHTING®**

Tel: 010 442 2809 | Fax 011 662 4319 | sales@nordland.co.za | www.nordland-lighting.com

Nordland reserves the right to change any specification or design without prior notice.