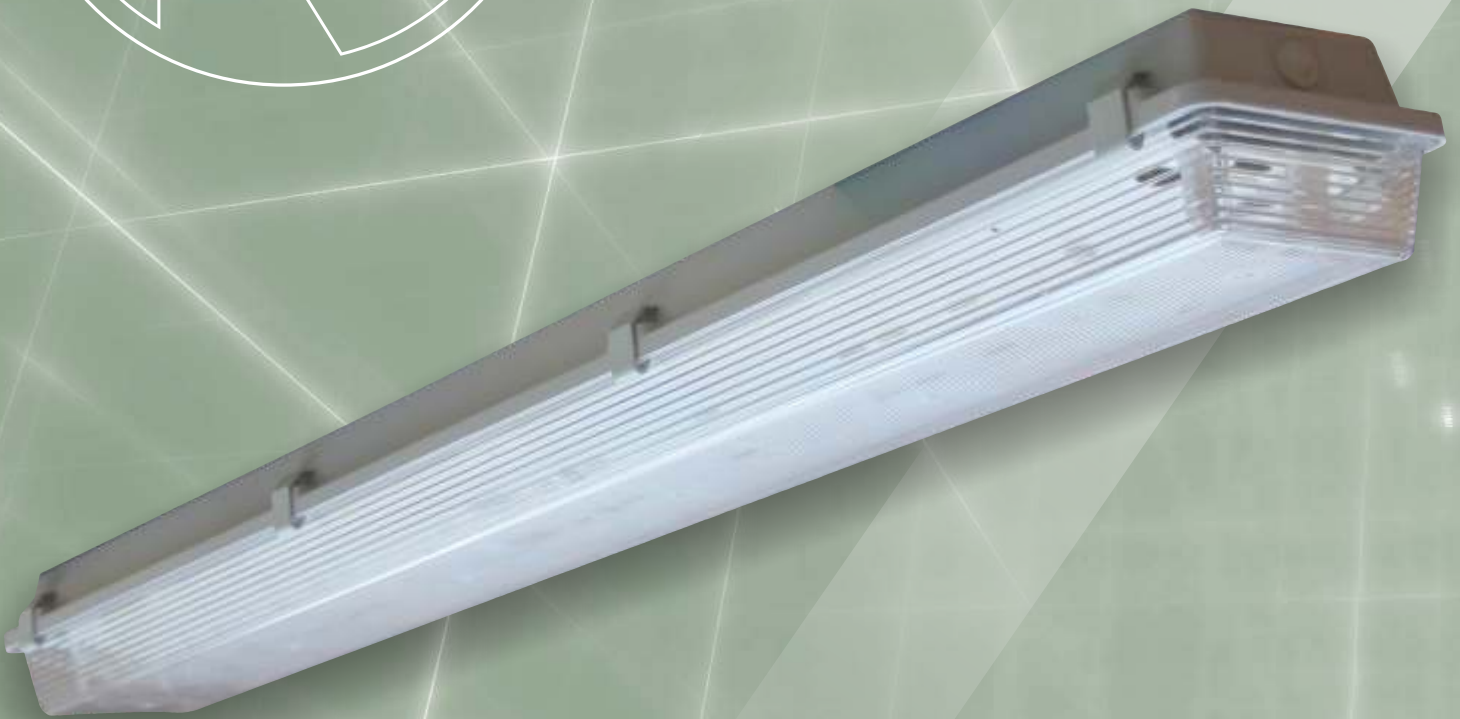


JBLS LED



The **JBLS LED** linear luminaire range is a high-performance industrial vapour proof DMC, glass fibre reinforced polyester luminaire that has been designed to operate with LED strips. It's suitable for wall, ceiling, bracket and pole mounting. The **JBLS LED** continues the proud heritage of NORDLAND LIGHTING's quality standards.



NORDLAND LIGHTING

JBLS LED

Applications: All non-hazardous areas, Industrial sites, Warehouses, Public Buildings, Underground Parking areas and Various Mining areas.

Body: Manufactured from DMC, compression moulded glass fibre reinforced polyester.

Clips: Polyamide clips supplied as standard. Stainless steel or vandal resistant stainless steel clips available on request.

Lens: Injection moulded frosted polycarbonate lens with linear internal prisms.

Gasket: Silicone sponge gasket.

Control Gear: Gear tray carries the LED driver and LED strips, and also acts as a reflector. Two cords allow the gear tray to be suspended from the body during installation and service.

Note: Lightning Protection: All electronic products such as light fittings and computers are subject to violent destruction when struck by lightning. An independent lightning protection device, well earthed, needs to be inserted in the supply line before the lighting circuit, where any electronic control gear is used in light fittings. Control gear damaged by lightning is not covered under guarantee.

Cable Entry: Two 20mm diameter cable entries are provided for through wiring. Plugs are supplied for blanking off cable entries. Glands are not provided.

Mounting:

- IP65: Optional stainless steel hanging brackets available on request.
- IP66: Brass body inserts allows for hook, wall/ceiling brackets or pole clamps to be used.

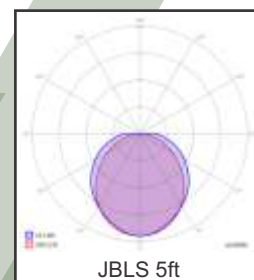
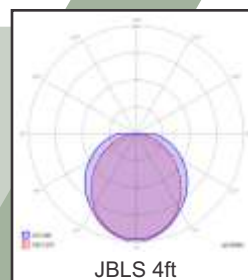
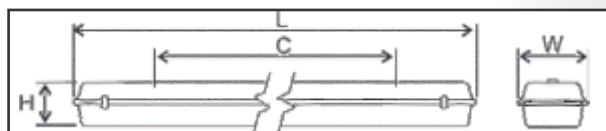
Ambient Temperature Rating: -15°C - +35°C

Ingress Protection Grade: IP65 standard/IP66 on request.

Emergency Mode: Emergency options available on request.

Photometric Data: Photometric files available on request.

Warranty: 5 Year



Please Note:

Wired gear trays are available separately for all the below mentioned models.

Model Name	JBLS LED					
	2ft (600mm)		4ft (1200mm)		5ft (1500mm)	
Amperage	500mA	350mA	500mA	350mA	500mA	350mA
Rated Wattage(W)	28W	36W	53W	68W	64W	90W
Luminous Efficacy (system)	136.5lm/W	136.5lm/W	136.5lm/W	136.5lm/W	136.5lm/W	136.5lm/W
Luminous Flux (system)	3822lm	4914lm	7235lm	9282lm	8736lm	12285lm
Colour Temperature	4000K					
Colour Rendering Index	>Ra80					
Rated Voltage	220V-240V AC, 50/60Hz					
Ingress Protection Grade	IP65					
Ambient Temperature	-15°C to +35°C					
Power Factor	>0,96					
Rated Lifetime	50 000 Hr.					
Installation	Wall, Ceiling, Bracket and Pole mounting					
Dimensions	L x W x H (2ft)		L x W x H (4ft)		L x W x H (5ft)	
	700x172x115mm		1310x172x115mm		1610x172x115mm	
Fixing Centres (FC)	500mm		800mm		1100mm	
Weight	4kg		5kg		7kg	

Nordland reserves the right to change any specification or design without prior notice.

