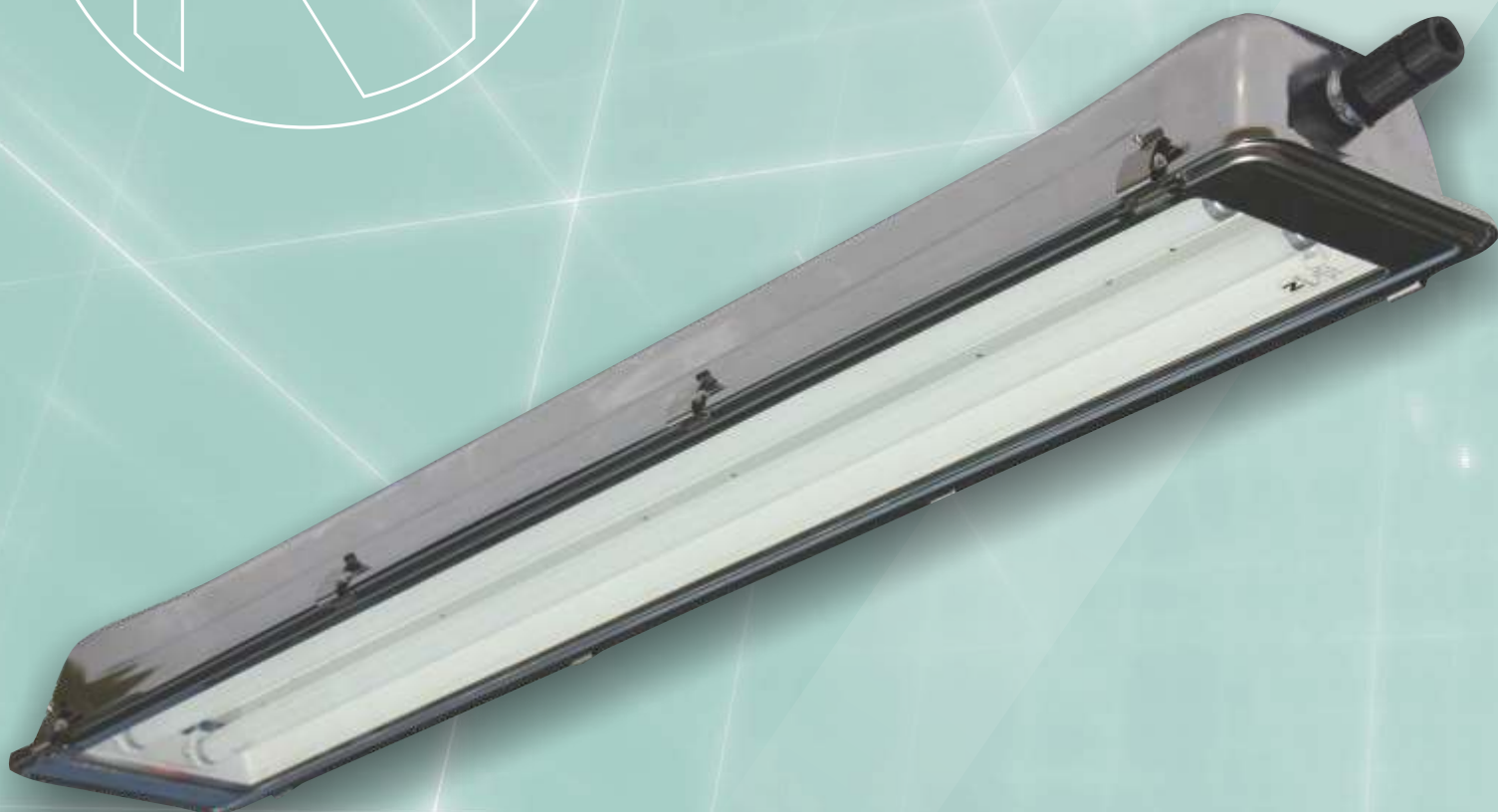


**N50**

**Zone 2, 21 & 22**



The **N50** linear luminaire range is a high-performance industrial stainless steel luminaire for use in hazardous Zone 2, 21 & 22 locations, and has been designed to operate conventional T8 fluorescent lamps. It's suitable for wall, ceiling, bracket and pole mounting. The **N50** continues the proud heritage of NORDLAND LIGHTING's quality standards.



**NORDLAND LIGHTING**

## N50

**Applications:** Zone 2, 21 & 22 Hazardous locations, and Highly corrosive areas.

**Body:** Manufactured from Stainless steel grade 304. Marine grade 316 available on special order. The single piece deep drawn body may not be drilled on site.

**Clips:** Double acting stainless steel clips with M4 socket head screws on outer clips.

**Lens:** 4mm thick clear tempered plate glass.

**Gasket:** Extruded silicone one piece gasket.

**Lens Frame:** Pressed from a single piece stainless steel sheet without joining welds and with extra wide ends for increased rigidity.

**Frame Suspension:** The lens frame is suspended on two points along one side of the body to allow the glass frame to swing open during servicing.

**Control Gear:** White epoxy coated gear tray carries the control gear and lamp holders, and is also designed to act as a reflector. Electronic control gear complies with Ex nA standards. Two cords allow the gear tray to be suspended from the body during installation and service.

**Note:** Lightning Protection: All electronic products such as light fittings and computers are subject to violent destruction when struck by lightning. An independent lightning protection device, well earthed, needs to be inserted in the supply line before the lighting circuit, where any electronic control gear is used in light fittings. Control gear damaged by lightning is not covered under guarantee.

**Cable Entry:** Threaded 20mm entry provided for a gland via a special welded insert boss. Corrosion resistant glands are recommended for use with stainless steel light fittings. Single gland entry standard.

**Mounting:** 8mm threaded nut welded into the rear mounting brackets allows the luminaire to be mounted using either brackets, or pole clamps.

**Wire Guard:** A stainless steel wire guard is available as an optional extra on the 4ft version only.

**Ambient Temperature Rating:** -20°C - +40°C

**Ingress Protection Grade:** IP66

**Emergency Mode:** Emergency Options available on request.

**Photometric Data:** Photometric files available on request.

**Warranty:** 1 Year



**Ex-mark:**

Ex nA IIC T4 Gb IP66  
Ex tb IIIC 135°C Db IP66

Model Name	Dimensions (mm)				No. Lamps (W)	Mass (kg)
	L	W	H	FC		
N50 218 W T8	790	219	135	490	2x18 W T8	7.3
N50 236 W T8	1370	219	135	1100	2x36 W T8	10.9
N50 258 W T8	1670	219	135	1195	2x58 W T8	11.9
N50 218 W/EM T8	790	219	135	490	2x18 W T8	8.5
N50 236 W/EM T8	1370	219	135	1100	2x36 W T8	11.2
N50 258 W/EM T8	1670	219	135	1195	2x58 W T8	12.2

Nordland reserves the right to change any specification or design without prior notice.

Tel: 011 662-4300 | Fax 011 662-4319 | sales@nordland.co.za | www.nordland-lighting.com



**NORDLAND LIGHTING**