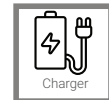
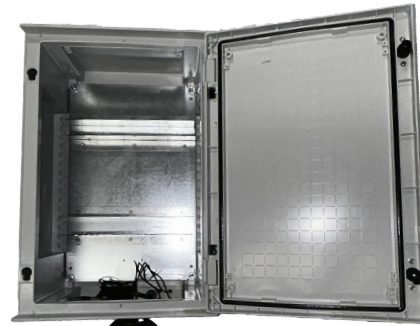


NZO Charging Station



Management
System
ISO 9001:2015

www.tuv.com
ID: 9105087029



Overview

- **Input Voltage:** Supports 100 to 230VAC input, compatible with the power systems typically used in mining operations.
- **High Charging Capacity:** Charges up to 4 NZO luminaires simultaneously, providing reliable illumination for mining teams in hazardous environments.
- **Rugged Construction:** Built with durable, impact-resistant materials to withstand the harsh conditions commonly found in mining sites.
- **Efficient Power Management:** Features intelligent charging technology to ensure safe, optimized charging for each luminaire, improving reliability and up-time.
- **Overcharge and Safety Protection:** Includes overcharge, over current, and short-circuit protection to safeguard both the luminaires and the charging station, ensuring safety in the mining environment.
- **Status Monitoring:** Equipped with LED indicators for real-time monitoring of charging status, allowing mining operators to easily track power levels and manage equipment readiness.

Charger - NZO - Mining

Applications



ELECTRICAL OPERATING DATA

Charger type	Self regulating Li-Ion charger
Input Voltage input, Frequency	100 - 230VAC +- 10% / 50 or 60Hz
Charger efficiency	>92% at full load
Allowed Operating Temperature	-15° C to +40° C
Electrical and Thermal Protection	Fused protection on incoming phase
Max charging capacity and power	Max 4 x NZO Luminaires, 5V @ 2A each, Maximum 40W

PRODUCT MATERIAL AND INSTALLATION

Housing Material and Finish	ABS Plastic, Grey
Lens and Gasket	Fermapor gasket cemented into groove
Ingress Protection and IK Rating	IP65 / IK08
Mounting and Installation options	Lockable External DB board type with mounting lugs on the back.

Dimensions and Packaging

Model	NZO Charging Station
Dimensions (Length x Width x Height) in mm	650 x 440 x 250
Weight (Unit / Packaged) in kg	13 / 13.2

Miscellaneous

Contact Nordland	T: 010 442 2809	E: Sales@Nordland.co.za	W: https://Nordland-Lighting.com/
Warranty Details	1 Year (Limited)	T's and C's Available from Nordland	W: https://Nordland-Lighting.com/
Free Services Provided	Lighting Audits	Lighting Designs by Accredited Professionals	Lighting Specification Writing and Tender Detail Assistance

52 Fransen street, Chamdor, Krugersdorp, Johannesburg, South Africa

The information provided in this datasheet is intended for general informational purposes only. Nordland reserves the right to make changes or updates to the specifications, design, and other information contained herein at any time without prior notice. While we strive to ensure the accuracy and completeness of the information provided, we do not guarantee that it is free from errors, omissions, or inaccuracies. Nordland shall not be held liable for any direct, indirect, incidental, or consequential damages arising from the use or reliance on the information contained in this datasheet. It is the responsibility of the user to verify and confirm all information before making any decisions or commitments based on it. For the most up-to-date information, please refer to the latest version of this datasheet or contact Nordland directly.

