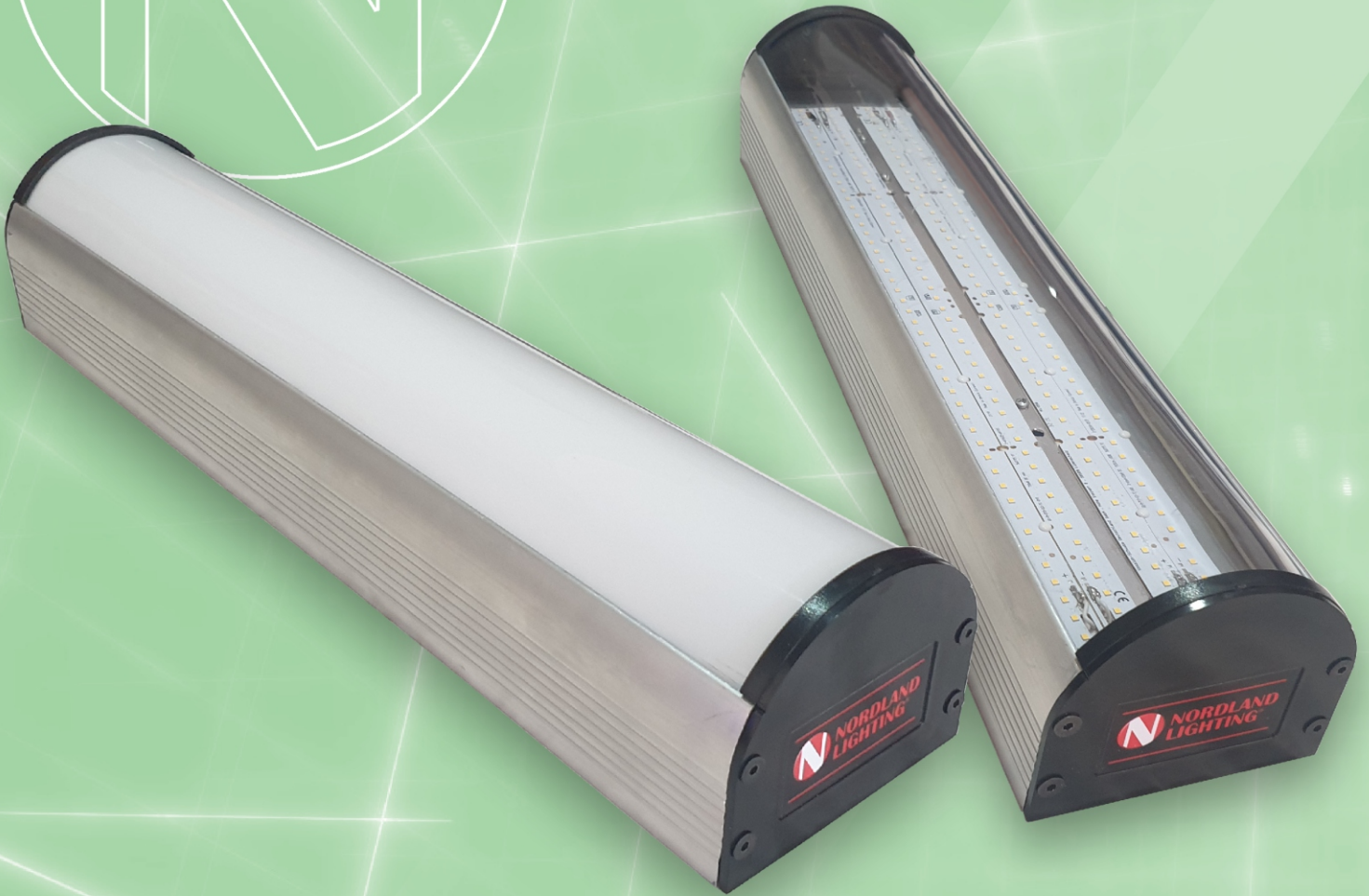


# NTP Tamperproof LED



The **NTP Tamperproof LED** linear luminaire range is a high-performance industrial vapour proof aluminium and polycarbonate luminaire that has been designed to operate with LED strips. It's suitable for wall, ceiling, and bracket mounting. The **NTP Tamperproof LED** continues the proud heritage of NORDLAND LIGHTING's quality standards.



**NORDLAND LIGHTING**

## NTP Tamperproof LED

**Applications:** All non-hazardous areas, Industrial sites, Warehouses, Public Buildings, Underground Parking areas and Various Mining areas.

**Body:** Body manufactured from extruded aluminium with a UV stabilized smooth clear polycarbonate lens and aluminium endcaps, fitted to the body. The luminaire is held together with 8 stainless steel tamperproof screws.

**Lens:** Moulded Polycarbonate lens, clear or frosted versions available.

**Gasket:** Rubber gasket.

**Control Gear:** Gear tray carries the LED driver and LED strips, and also acts as a reflector.

**Cable Entry:** One 20mm gland entry is provided with IP gland.

**Mounting:** By means of a special mounting bracket (provided) for surface, wall and ceiling mounting

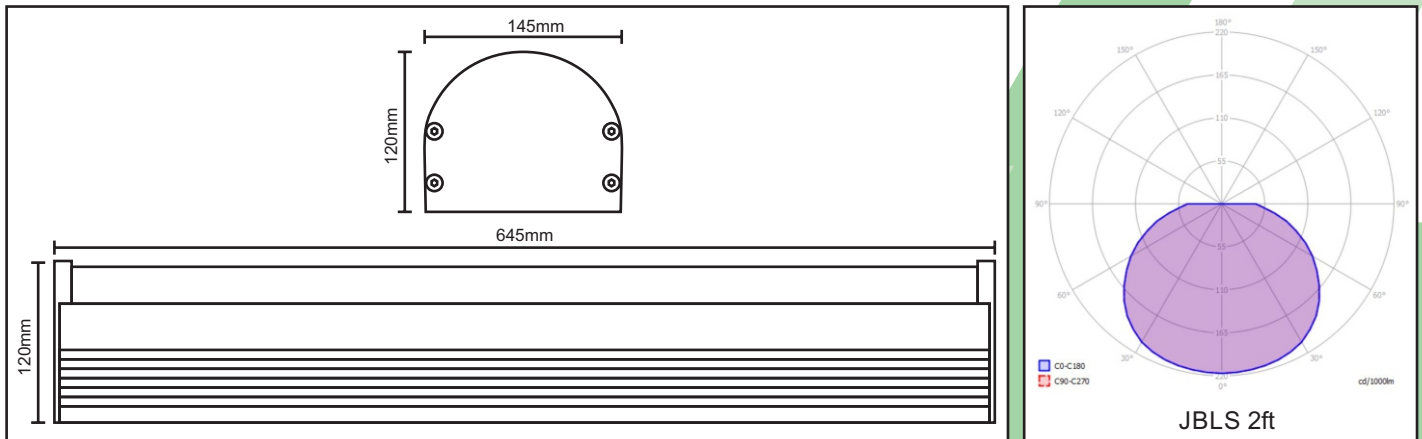
**Ambient Temperature Rating:** -15°C - +35°C

**Ingress Protection Grade:** IP65 standard/IP66 on request.

**Emergency Mode:** Emergency options available on request.

**Photometric Data:** Photometric files available on request.

**Warranty:** 5 Year



Model Name	JBA Tamperproof LED 2ft (600mm)			
<b>Amperage</b>	500mA	350mA	500mA	350mA
<b>Rated Wattage(W)</b>	28W	36W	53W	68W
<b>Luminous Efficacy (system)</b>	136.5lm/W	136.5lm/W	136.5lm/W	136.5lm/W
<b>Luminous Flux (system)</b>	3822lm	4914lm	7235lm	9282lm
<b>Colour Temperature</b>	4000K			
<b>Colour Rendering Index</b>	>Ra80			
<b>Rated Voltage</b>	220V-240V AC, 50/60Hz			
<b>Ingress Protection Grade</b>	IP65			
<b>Ambient Temperature</b>	-15°C to +35°C			
<b>Power Factor</b>	>0,96			
<b>Rated Lifetime</b>	50 000 Hr.			
<b>Installation</b>	Wall, Ceiling, Bracket and Pole mounting			
<b>Dimensions</b>	L x W x H (2ft) 600x172x115mm			
<b>Weight</b>	3,6kg			

Nordland reserves the right to change any specification or design without prior notice.

Tel: 010 442 2809 | Fax 011 662-4319 | sales@nordland.co.za | www.nordland-lighting.com



**NORDLAND LIGHTING**